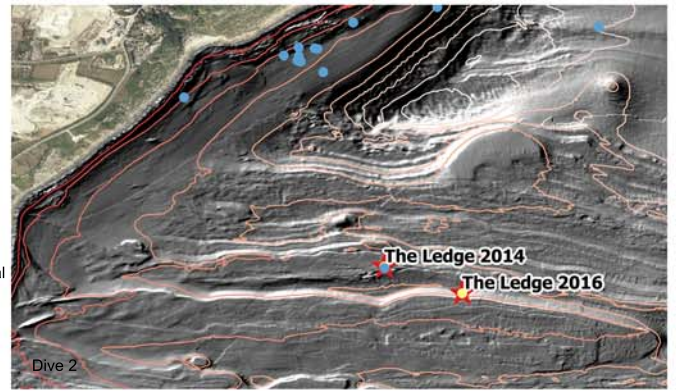


Aerial Photograph © Teignbridge District Council. Data/image courtesy of the Southwest Regional Coastal Monitoring Programme. The data sets are supplied under the Open Government Licence. The bathymetric data were derived using data from DORIS (DORset Integrated Seabed survey), a project involving Dorset Wildlife Trust, The Maritime and Coastguard Agency, Channel Coastal Observatory and the Royal Navy, with major funding from Viridor Credits Environmental Company. Other partners include Natural England, Dorset Strategic Partnership, the National Oceanography Centre and University of Southampton.



Dorset Seasearch Dive Report - Bat's Head Reef & The Ledge 30 July 2016

A glorious calm, sunny day, you could almost say too hot to be out on deck! The first dive was a drift at about 1knot (too fast for note taking) along a reef under Bat's Head west of Durdle Door in about 18m. The second dive was on the outer edge of The Ledge off the east side of Portland Bill. We had a well timed slack water for this dive and a dignified run over to the site with time for team to pose with Church Ope Cove in the background



The Saturday Team off Church Ope Cove



Colourful faunal turf on boulders, Bat's Head Drift



Large Ross Coral colonies, Bat's Head Drift



Branching and cushion sponges - Bat's Head Drift



© Mike Markey, 2016
 Bat's Head Drift - flying Queen Scallop (*Aequipecten opercularis*)



© Nigel Topham, 2016
 Bat's Head Drift - Queen scallops spoiling the vis'!



© Lin Baldock, 2016
 Bat's Head Drift
 Mega-ripple of shell and dead maerl gravel over bedrock with scattered fragments of live maerl.



© Lin Baldock, 2016
 Bat's Head Drift
 Sunstar, *Crossaster papposus*, and unusual sighting east of Start Point in Devon.

Here is a link to Tim Watson's short video from the drift dive
 Swimming Queen Scallops: <https://www.youtube.com/watch?v=F5M5ZWNy50Y>



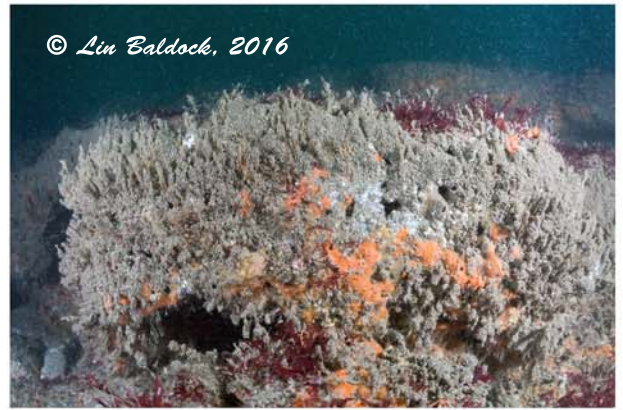
© Mike Markey, 2016
 The Ledge
 Carrot sponge, *Amphilectus fucorum*, red bryozoan crust *Cellaria* bryozoan and Anetnna hydroid (*Nemertesia antennina*) on cobbles with baranclcs



© Nigel Topham, 2016
 The Ledge
 Old *Tubularia* stalks, *Cellaria* bryozoan, Carrot sponge and striped anemone (*Actinothoes sphyrodeta*)



The Ledge
Anetenna hydroid, red encrusting bryozoan and old *Tubularia* covered in "brown fuzz" which Ross pointed out was densely packed amphipod tubes, possibly *Jassa*.



The Ledge
Mat of amphipod tubes coating old stalks of *Tubularia* on the lip of the ledge exposed to the full force of the tide. Hard to imagine what the place is like at maximum spring tide flow!

Link to Tim Watson's video
Railway line Wreck Reef: <https://www.youtube.com/watch?v=00LBnTob9j4>

First Dive details:

Bat's Head Reef (3km west of Lulworth Cove)

Position: Drift start: 50° 36.84'N 002° 17.10'W end: 50° 36.89'N 002° 17.97'W (towed GPS RY&NT, WGS84)

Overview: Low rock ledges with scattered medium boulders supporting a diverse invertebrate fauna. Towards the west megaripples of coarse shell and maerl gravel over bedrock with many very active *Aequipecten opercularis*. Here is a link to Tim Watson's video

Interesting/unusual species: Scattered Pink seafan *Eunicella verrucosa* at the start, one juvenile 15mm high reported. Branching sponges and large colonies of *Pentapora foliacea*. Fragments of live maerl scattered in the megaripples towards the west end of the drift. Sunstar, *Crossaster papposus*, a rare sighting east of Start Point.

Human impact: potting in the vicinity.

Second Dive details:

The Ledge (about 1.5km south east of Church Ope Cove, east side of Portland Bill)

Position: 50° 41.48'N 002° 22.47'W (dive boat GPS, WGS84)

Overview: Very gently sloping bedrock dropping slightly more steeply onto a boulder/cobble slope to the north, with short lengths of bedrock ledges. Fauna dominated by hydroid turf, colourful sponges, barnacles and a dense mat of amphipod tubes (possibly *Jassa*) especially on the parts most exposed to the full force of the tide.

Human impacts: Potting in the vicinity. Large quantities of monofilament line tangled among the boulders and various bits of tackle such as lures, lead weights etc.

Thanks to: Nick Bentall & Lucy Collins (skipper & crew, Scimitar), the organiser Charlotte Bolton and the divers: Lin Baldock, Emma Barton, Fiona Bowles, Ross, Bullimore, Emma Collins, Des Curran, Mike Markey, Nigel Topham, Simon Loveday, Fiona Ravenscroft, Tim Watson, Richard Yorke.

