



Scotland Seasearch: Annual summary report 2017



Report Produced by Scotland Coordinator Natalie Hirst

Cover Photo: Natalie Hirst

Coordination during 2017 was overseen in West Argyll and Bute by Owen Paisley and for the wider Scotland region by Natalie Hirst.



Contents

Surveys.....	3
Courses.....	3
Promotion	5
Diving	5
Data Summary.....	7
Acknowledgements.....	8
Appendices.....	9
Appendix 1. Total biotopes recorded during 2017	9
Appendix 2. PMF Biotope records 2017	15
Appendix 3. PMF Species recorded	25
Figure 1 Divers surveying <i>Limaria hians</i> Flameshell beds (Photo credits: Peter Bardsley).....	3
Figure 2 Observer training, Eyemouth (Photo credit: Natalie Hirst)	4
Figure 3 Practical Surveyor training, FSC Millport (Left) and intertidal snorkel following Observer training, Eyemouth (Right) (Photo credits: Natalie Hirst).....	4
Figure 4 Collaboration with St Abbs VMNR for “Jump in” Week, and Seasearch with MCS at the Great Northern Dive show (Photo credits: Natalie Hirst).....	5
Figure 5 Gourrock Horse mussel bed (Top Left, Photo credit: Sandra Turner), Loch Fyne Fireworks anemones (Top Right, Photo credit: Peter Bardsley), and Diver taking sediment peat cores for Orkney Paleo-archaeology study (Bottom centre, Photo credit: Kerry Rennie)	6
Figure 6 Seasearch record locations 2017	7

Surveys

During 2017, 17 days organised diving took place, involving 53 divers and contributing to a total of 94 forms. Overall, including both organised Seasearch activities and forms sent in from divers independent diving, Scotland contributed almost 19% of the total forms received by Seasearch nationally. (294 out of 1588 forms). Overall the proportion of survey forms compared to observation forms was also very high (64% vs. 35%) for Scotland.

Highlights of the year included continued monitoring of Priority Marine Features (PMFs), including Fireworks anemones, and Horse mussels but also raising awareness of these species to the wider UK Seasearch community with a number of visiting divers to the Scotland Seasearch region. Also some notable species from the Hebrides Liveaboard trip which unfortunately due to bad weather remained mainly in the Sound of Mull but recorded numerous PMFs at more than 1 dive site, particularly dense in Loch Sunart of Fireworks anemones, all three seapen species and *Limaria* flameshell beds, as well as interesting Northern species such as the Goosefoot starfish. Perhaps the greatest achievement in Scotland of 2017, to which Seasearch played a part, was the emergency designation of Loch Carron eMPA, following the devastation caused by a scallop dredger. The site was investigated by a group of dedicated local community members, divers and fishermen who recorded the findings as experienced Seasearch Surveyors and submitted the data straight away allowing it to be used by SNH immediately. The turn-around in designation of a matter of days was only possible due to the standard of data collected, and is testament to how important Seasearch data collection can be.

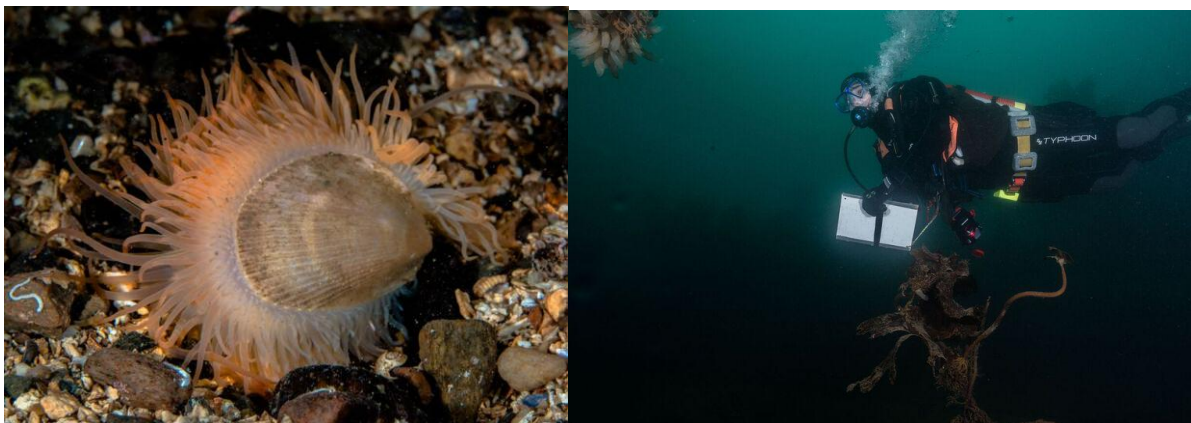


Figure 1 Divers surveying Limaria hians Flameshell beds (Photo credits: Peter Bardsley)

Courses

In total, three Observer courses and one Surveyor course were carried out in Scotland with a total of 24 participants.



An Observer course was run for Cumbernauld Dive club April 1st for 6 participants, all members of the club, at their weekly meeting place of Tryst Sports centre. Further qualification dives were arranged at Furnace tearooms dive site, Loch Long on May 14th with 3 participants.

An Observer course was run in Fort William March 18th with 9 participants, involving students from the University of the Highlands and Islands.

An Observer course was run at Eyemouth Hippodrome, as part of the “Jump In” week of events organised by St Abbs Volunteer Marine Reserve. The course had 6 participants, all of whom undertook a qualifying snorkel/intertidal survey the following day as weather cancelled diving. The course was also used as Tutor training/refresher for Nicola Faulks and Sarah Bowen who helped deliver the course.



Figure 2 Observer training, Eyemouth (Photo credit: Natalie Hirst)

Finally, a Surveyor course was run at FSC Millport, Isle of Cumbrae for 3 participants. The course was also used as final sign off for tutor training for Natalie Hirst, however due to 2 people dropping out it did not cover costs and so it was decided that surveyor courses cannot be annual and should only be run on demand.



Figure 3 Practical Surveyor training, FSC Millport (Left) and intertidal snorkel following Observer training, Eyemouth (Right) (Photo credits: Natalie Hirst)



Promotion

Seasearch Scotland Coordinator Natalie Hirst attended the Great Northern dive show April 8/9th, as Seasearch representative on the MCS stand. The course attracted numerous enquiries for courses which were passed to the relevant regional coordinators. Natalie also delivered a talk at the show on Sunday.

Seasearch Scotland Coordinator Natalie Hirst was invited by the organiser of the Scottish Nudibranch Festival, Jim Anderson, to deliver a lecture on Seasearch at the event which was given on Saturday 17th to approximately 12 people.

Seasearch Scotland continues to have a close relationship with ScotSac, occupying a page bulletin in each quarterly Scottish Diver Magazine, available to members and through local cubs and dive centres. In total 4 articles were written for the magazine with contributions from Owen Paisley, Natalie Hirst and Calum Duncan.

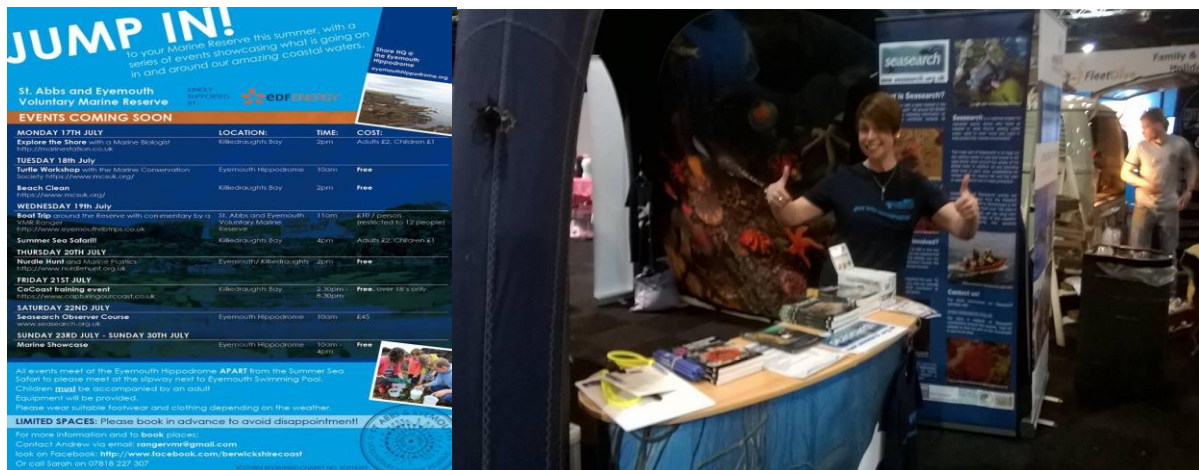


Figure 4 Collaboration with St Abbs VMNR for “Jump in” Week, and Seasearch with MCS at the Great Northern Dive show (Photo credits: Natalie Hirst)

Diving

January 14th - Loch Long fireworks anemone survey - 6 divers, 2 dives over 1 day.

February 18th - Greenock shore diving Horse mussel beds - 5 divers, 1 dive over 1 day. (Covered in West Coast summary.)

April 14-19th - Outer Hebrides Liveaboard - 11 divers, 9 dives over 5 days.

May 14th - Observer training dives - 4 divers, 2 dives over 1 day.

May 20/21st - Moray Firth RIB Dives - 5 divers, 3 dives over 2 days.

June 10/11th - Creran Serpula reef survey - 11 divers, 4 dives over 2 days. (Covered in West coast summary.)

July 28-30th - Orkney Paleo-archaeology survey, with St Andrews University - 2 divers, 3 dives over 2 days.

Aug 12/13th - Surveyor course qualifying dive - 4 divers, 1 dive over 1 day

October 8th - Eyemouth boat diving, including Observer qualifying dives - 5 divers, 2 dives over 1 day.

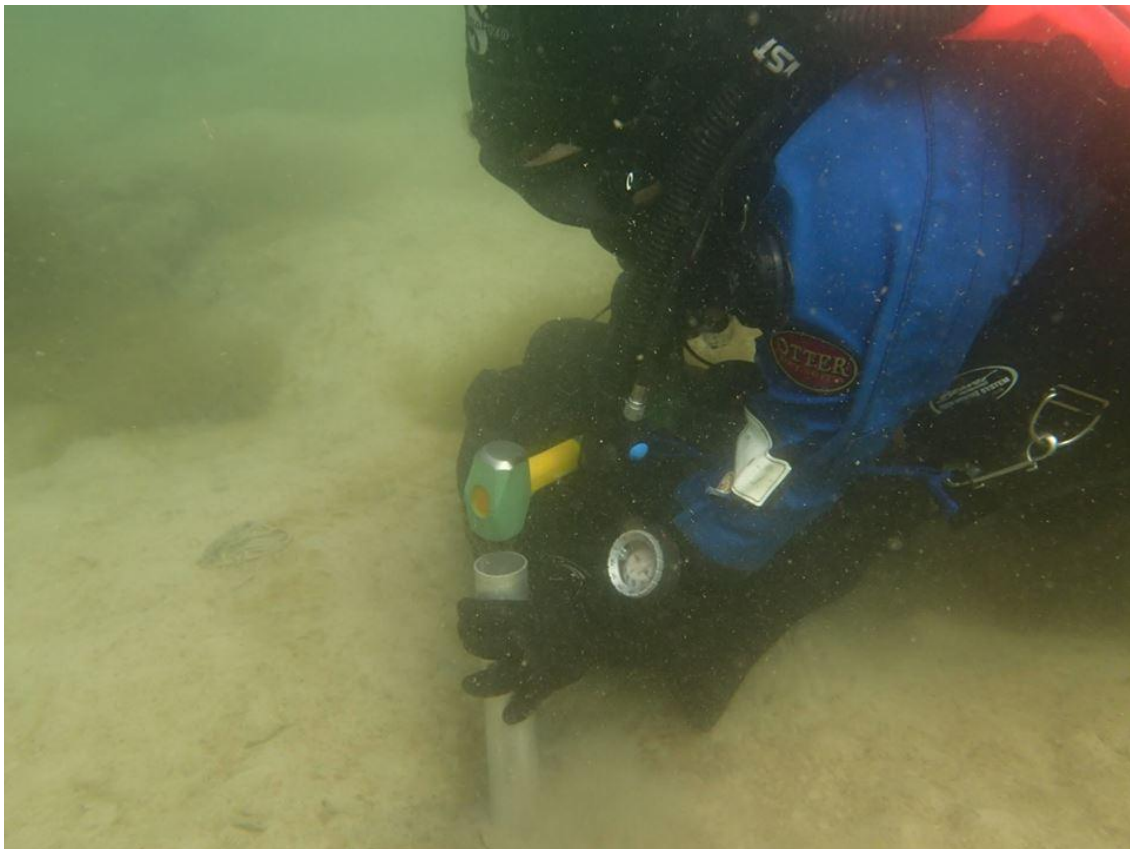


Figure 5 Gourock Horse mussel bed (Top Left, Photo credit: Sandra Turner), Loch Fyne Fireworks anemones (Top Right, Photo credit: Peter Bardsley), and Diver taking sediment peat cores for Orkney Paleo-archaeology study (Bottom centre, Photo credit: Kerry Rennie)

Data Summary

In total 294 forms were received and input to Marine Recorder. The resulting Snapshot contains 278 events, and over 11,500 individual taxon records.

Figure 6 below shows locations of all records received in Scotland in 2017.

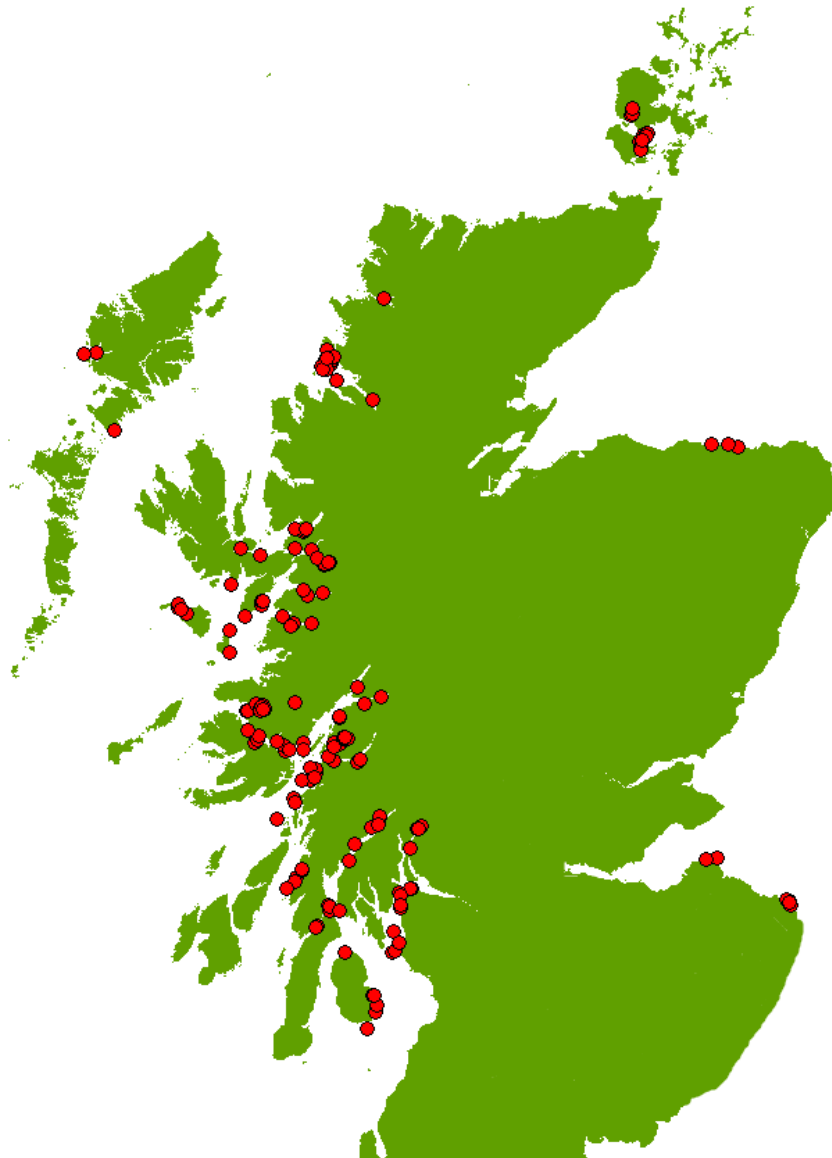


Figure 6 Seasearch record locations 2017

In total 116 biotopes were recorded from all forms, See **Appendix 1**. Of the total biotopes recorded, 19 were Priority Marine Features (See **Appendix 2**) and were recorded across 90 separate forms.

In total 11,506 individuals were recorded, of which 11 PMF species were recorded across 72 forms, see **Appendix 3**.



Acknowledgements

A huge thank you to all the volunteer divers who gave freely of their time and energy in 2017. They include in particular; Neil MacInnes, Becky Hitchin, Sue Scott, James Lynott, Sarah Bowen, David Kipling, George Brown, Nicola Faulks, Kerry Rennie, Richie West, Tony O'Callaghan, Rory O'Callaghan, Paul Kay and Lucy Kay, Ruth Sharratt, Iain Dixon, Rob Spray, Peter Bardsley, Jack Willans and Simon Loveday.

Seasearch in Scotland gratefully acknowledge the financial support provided by Scottish Natural Heritage and Marine Conservation Society.

 www.facebook.com/groups/seasearch.scotland/

Seasearch is a partnership between the Marine Conservation Society (MCS), The Wildlife Trusts, statutory nature conservation bodies and others, co-ordinated nationally by MCS and co-ordinated and delivered locally in Scotland by SNH and MCS through local Seasearch co-ordinators. For more information on Seasearch and to see all of the partners involved nationally, please visit www.seasearch.org.uk or email info@seasearch.org.uk



Appendices

Appendix 1. Total biotopes recorded during 2017

Biotope Code	Biotope Description
CR.FCR.Cv	Circalittoral caves and overhangs
CR.FCR.Cv.SpCup	Sponges, cup corals and anthozoans on shaded or overhanging circalittoral rock
CR.FCR.FouFa	Circalittoral fouling faunal communities
CR.FCR.FouFa.Aasp	<i>Ascidella aspersa</i> on circalittoral artificial substrata
CR.FCR.FouFa.AdigMsen	<i>Alcyonium digitatum</i> and <i>Metridium senile</i> on moderately wave-exposed circalittoral steel wrecks
CR.HCR	High energy circalittoral rock
CR.HCR.XFa	Mixed faunal turf communities
CR.HCR.XFa.CvirCri	<i>Corynactis viridis</i> and a mixed turf of crisiids, <i>Bugula</i> , <i>Scrupocellaria</i> , and <i>Cellaria</i> on moderately tide-swept exposed circalittoral rock
CR.HCR.XFa.FluCoAs.SmAs	<i>Flustra foliacea</i> , small solitary and colonial ascidians on tide-swept circalittoral bedrock or boulders
CR.HCR.XFa.SpAnVt	Sponges and anemones on vertical circalittoral bedrock
CR.HCR.XFa.SwiLgAs	Mixed turf of hydroids and large ascidians with <i>Swiftia pallida</i> and <i>Caryophyllia smithii</i> on weakly tide-swept circalittoral rock
CR.LCR	Low energy circalittoral rock
CR.LCR.BrAs	Brachiopod and ascidian communities
CR.LCR.BrAs.AmenCio	Solitary ascidians, including <i>Ascidia mentula</i> and <i>Ciona intestinalis</i> , on wave-sheltered circalittoral rock
CR.LCR.BrAs.AmenCio.Ant	Solitary ascidians, including <i>Ascidia mentula</i> and <i>Ciona intestinalis</i> , with <i>Antedon</i> spp. on wave-sheltered circalittoral rock



Biotope Code	Biotope Description
CR.LCR.BrAs.AmenCio.Bri	Dense brittlestars with sparse <i>Ascidia mentula</i> and <i>Ciona intestinalis</i> on sheltered circalittoral mixed substrata
CR.LCR.BrAs.AntAsH	<i>Antedon</i> spp., solitary ascidians and fine hydroids on sheltered circalittoral rock
CR.LCR.BrAs.LgAsSp	Large solitary ascidians and erect sponges on wave-sheltered circalittoral rock
CR.LCR.BrAs.NeoPro	<i>Neocrania anomala</i> and <i>Protanthea simplex</i> on sheltered circalittoral rock
CR.LCR.BrAs.NeoPro.FS	<i>Neocrania anomala</i> and <i>Protanthea simplex</i> on very wave-sheltered circalittoral rock
CR.LCR.BrAs.NeoPro.VS	<i>Neocrania anomala</i> , <i>Dendrodoa grossularia</i> and <i>Sarcodictyon roseum</i> on variable salinity circalittoral rock
CR.MCR	Moderate energy circalittoral rock
CR.MCR.EcCr	Echinoderms and crustose communities
CR.MCR.EcCr.AdigVt	<i>Alcyonium digitatum</i> and faunal crust communities on vertical circalittoral bedrock
CR.MCR.EcCr.CarSp	<i>Caryophyllia smithii</i> , sponges and crustose communities on wave-exposed circalittoral rock
CR.MCR.EcCr.CarSwi	<i>Caryophyllia smithii</i> and <i>Swiftia pallida</i> on circalittoral rock
CR.MCR.EcCr.CarSwi.Aglo	<i>Caryophyllia smithii</i> , <i>Swiftia pallida</i> and <i>Alcyonium glomeratum</i> on wave-sheltered circalittoral rock
CR.MCR.EcCr.CarSwi.LgAs	<i>Caryophyllia smithii</i> , <i>Swiftia pallida</i> and large solitary ascidians on exposed or moderately exposed circalittoral rock
CR.MCR.EcCr.FaAlCr	Faunal and algal crusts on exposed to moderately wave-exposed circalittoral rock
CR.MCR.EcCr.FaAlCr.Adig	<i>Alcyonium digitatum</i> , <i>Pomatoceros triqueter</i> , algal and bryozoan crusts on wave-exposed circalittoral rock
CR.MCR.EcCr.FaAlCr.Bri	Brittlestars on faunal and algal encrusted exposed to moderately wave-exposed circalittoral rock
CR.MCR.EcCr.FaAlCr.Car	<i>Caryophyllia smithii</i> with faunal and algal crusts on moderately wave-exposed circalittoral rock
CR.MCR.EcCr.FaAlCr.Sec	<i>Alcyonium digitatum</i> with <i>Securiflustra securifrons</i> on tide-swept moderately wave-exposed circalittoral rock
IR.FIR.IFou	Infralittoral fouling seaweed communities
IR.HIR.KFaR	Kelp with cushion fauna and/or foliose red seaweeds



Biotope Code	Biotope Description
IR.HIR.KFaR.FoR	Foliose red seaweeds on exposed lower infralittoral rock
IR.HIR.KFaR.LhypR.Ft	<i>Laminaria hyperborea</i> forest with dense foliose red seaweeds on exposed upper infralittoral rock
IR.HIR.KFaR.LhypR.Pk	<i>Laminaria hyperborea</i> park with dense foliose red seaweeds on exposed lower infralittoral rock
IR.LIR	Low energy infralittoral rock
IR.LIR.IFaVS	Faunal communities on variable or reduced salinity infralittoral rock
IR.LIR.IFaVS.MytRS	<i>Mytilus edulis</i> beds on reduced salinity infralittoral rock
IR.LIR.K	Silted kelp communities (sheltered infralittoral rock)
IR.LIR.K.LhypCape	Silted cape-form <i>Laminaria hyperborea</i> on very sheltered infralittoral rock
IR.LIR.K.LhypLsac.Ft	Mixed <i>Laminaria hyperborea</i> and <i>Laminaria saccharina</i> forest on sheltered upper infralittoral rock
IR.LIR.K.LhypLsac.Gz	Grazed, mixed <i>Laminaria hyperborea</i> and <i>Laminaria saccharina</i> on sheltered infralittoral rock
IR.LIR.K.LhypLsac.Pk	Mixed <i>Laminaria hyperborea</i> and <i>Laminaria saccharina</i> park on sheltered lower infralittoral rock
IR.LIR.K.Lsac	<i>Laminaria saccharina</i> on very sheltered infralittoral rock
IR.LIR.K.Lsac.Ft	<i>Laminaria saccharina</i> forest on very sheltered upper infralittoral rock
IR.LIR.K.Lsac.Gz	Grazed <i>Laminaria saccharina</i> with <i>Echinus</i> , brittlestars and coralline crusts on sheltered infralittoral rock
IR.LIR.K.Lsac.Pk	<i>Laminaria saccharina</i> park on very sheltered lower infralittoral rock
IR.LIR.KVS.LsacPsaVS	<i>Laminaria saccharina</i> and <i>Psammechinus miliaris</i> on variable salinity grazed infralittoral rock
IR.LIR.Lag	Submerged fucoids, green or red seaweeds (low salinity infralittoral rock)
IR.LIR.Lag.FChoG	Mixed fucoids, <i>Chorda filum</i> and green seaweeds on reduced salinity infralittoral rock
IR.MIR	Moderate energy infralittoral rock
IR.MIR.KR	Kelp and red seaweeds (moderate energy infralittoral rock)
IR.MIR.KR.Ldig	<i>Laminaria digitata</i> on moderately exposed sublittoral fringe rock
IR.MIR.KR.Ldig.Ldig	<i>Laminaria digitata</i> on moderately exposed sublittoral fringe bedrock
IR.MIR.KR.Lhyp	<i>Laminaria hyperborea</i> and foliose red seaweeds on moderately exposed infralittoral rock
IR.MIR.KR.Lhyp.Ft	<i>Laminaria hyperborea</i> forest and foliose red seaweeds on moderately exposed upper infralittoral rock
IR.MIR.KR.Lhyp.GzFt	Grazed <i>Laminaria hyperborea</i> forest with coralline crusts on upper infralittoral rock



Biotope Code	Biotope Description
IR.MIR.KR.Lhyp.GzPk	Grazed <i>Laminaria hyperborea</i> park with coralline crusts on lower infralittoral rock
IR.MIR.KR.Lhyp.Pk	<i>Laminaria hyperborea</i> park and foliose red seaweeds on moderately exposed lower infralittoral rock
IR.MIR.KR.LhypT	<i>Laminaria hyperborea</i> on tide-swept, infralittoral rock
IR.MIR.KR.LhypT.Ft	<i>Laminaria hyperborea</i> forest, foliose red seaweeds and a diverse fauna on tide-swept upper infralittoral rock
IR.MIR.KR.LhypT.Pk	<i>Laminaria hyperborea</i> park with hydroids, bryozoans and sponges on tide-swept lower infralittoral rock
IR.MIR.KR.LhypTX.Ft	<i>Laminaria hyperborea</i> forest and foliose red seaweeds on tide-swept upper infralittoral mixed substrata
IR.MIR.KR.LhypTX.Pk	<i>Laminaria hyperborea</i> park and foliose red seaweeds on tide-swept lower infralittoral mixed substrata
IR.MIR.KR.XFoR	Dense foliose red seaweeds on silty moderately exposed infralittoral rock
IR.MIR.KT	Kelp and seaweed communities in tide-swept sheltered conditions
IR.MIR.KT.LdigT	<i>Laminaria digitata</i> , ascidians and bryozoans on tide-swept sublittoral fringe rock
IR.MIR.KT.LsacT	<i>Laminaria saccharina</i> with foliose red seaweeds and ascidians on sheltered tide-swept infralittoral rock
IR.MIR.KT.XKT	Mixed kelp with foliose red seaweeds, sponges and ascidians on sheltered tide-swept infralittoral rock
LR.HLR.FR	Robust furoid and/or red seaweed communities
SS.SBR.PoR.Ser	<i>Serpula vermicularis</i> reefs on very sheltered circalittoral muddy sand
SS.SBR.SMus	Sublittoral mussel beds (on sublittoral sediment)
SS.SBR.SMus.ModCvar	<i>Modiolus modiolus</i> beds with <i>Chlamys varia</i> , sponges, hydroids and bryozoans on slightly tide-swept very sheltered circalittoral mixed substrata
SS.SBR.SMus.ModHAs	<i>Modiolus modiolus</i> beds with fine hydroids and large solitary ascidians on very sheltered circalittoral mixed substrata
SS.SCS.CCS	Circalittoral coarse sediment
SS.SCS.CCS.Nmix	<i>Neopentadactyla mixta</i> in circalittoral shell gravel or coarse sand
SS.SCS.CCS.PomB	<i>Pomatoceros triqueter</i> with barnacles and bryozoan crusts on unstable circalittoral cobbles and pebbles



Biotope Code	Biotope Description
SS.SCS.ICS	Infralittoral coarse sediment
SS.SCS.ICS.SLan	Dense <i>Lanice conchilega</i> and other polychaetes in tide-swept infralittoral sand and mixed gravelly sand
SS.SMp	Sublittoral macrophyte-dominated communities on sediments
SS.SMp.KSwSS	Kelp and seaweed communities on sublittoral sediment
SS.SMp.KSwSS.LsacCho	<i>Laminaria saccharina</i> and <i>Chorda filum</i> on sheltered upper infralittoral muddy sediment
SS.SMp.KSwSS.LsacMxVS	<i>Laminaria saccharina</i> with <i>Psammechinus miliaris</i> and/or <i>Modiolus modiolus</i> on variable salinity infralittoral mixed sediment
SS.SMp.KSwSS.LsacR	<i>Laminaria saccharina</i> and red seaweeds on infralittoral sediments
SS.SMp.KSwSS.LsacR.Gv	<i>Laminaria saccharina</i> and robust red algae on infralittoral gravel and pebbles
SS.SMp.KSwSS.LsacR.Mu	<i>Laminaria saccharina</i> with red and brown seaweeds on lower infralittoral muddy mixed sediment
SS.SMp.Mrl	Maerl beds
SS.SMp.Mrl.Lgla	<i>Lithothamnion glaciale</i> maerl beds in tide-swept variable salinity infralittoral gravel
SS.SMp.Mrl.Pcal.R	<i>Phymatolithon calcareum</i> maerl beds with red seaweeds in shallow infralittoral clean gravel or coarse sand
SS.SMp.SSgr.Zmar	<i>Zostera marina/angustifolia</i> beds on lower shore or infralittoral clean or muddy sand
SS.SMu	Sublittoral cohesive mud and sandy mud communities
SS.SMu.CFiMu	Circalittoral fine mud
SS.SMu.CFiMu.BlyrAchi	<i>Brissopsis lyrifera</i> and <i>Amphiura chiajei</i> in circalittoral mud
SS.SMu.CFiMu.MegMax	Burrowing megafauna and <i>Maxmuelleria lankesteri</i> in circalittoral mud
SS.SMu.CFiMu.SpnMeg	Seapens and burrowing megafauna in circalittoral fine mud
SS.SMu.CFiMu.SpnMeg.Fun	Seapens, including <i>Funiculina quadrangularis</i> , and burrowing megafauna in undisturbed circalittoral fine mud
SS.SMu.CSaMu	Circalittoral sandy mud
SS.SMu.CSaMu.VirOphPmax	<i>Virgularia mirabilis</i> and <i>Ophiura</i> spp. with <i>Pecten maximus</i> on circalittoral sandy or shelly mud



Biotope Code	Biotope Description
SS.SMu.CSaMu.VirOphPmax.HAs	<i>Virgularia mirabilis</i> and <i>Ophiura</i> spp. with <i>Pecten maximus</i> , hydroids and ascidians on circalittoral sandy or shelly mud with stones
SS.SMu.IFiMu	Infralittoral fine mud
SS.SMu.IFiMu.Are	<i>Arenicola marina</i> in infralittoral mud
SS.SMu.IFiMu.Beg	<i>Beggiatoa</i> spp. on anoxic sublittoral mud
SS.SMu.IFiMu.PhiVir	<i>Philine aperta</i> and <i>Virgularia mirabilis</i> in soft stable infralittoral mud
SS.SMx.CMx	Circalittoral mixed sediment
SS.SMx.CMx.ClloModHo	Sparse <i>Modiolus modiolus</i> , dense <i>Cerianthus lloydii</i> and burrowing holothurians on sheltered circalittoral stones and mixed sediment
SS.SMx.CMx.ClloMx	<i>Cerianthus lloydii</i> and other burrowing anemones in circalittoral muddy mixed sediment
SS.SMx.CMx.ClloMx.Nem	<i>Cerianthus lloydii</i> with <i>Nemertesia</i> spp. and other hydroids in circalittoral muddy mixed sediment
SS.SMx.CMx.FluHyd	<i>Flustra foliacea</i> and <i>Hydrallmania falcata</i> on tide-swept circalittoral mixed sediment
SS.SMx.CMx.OphMx	<i>Ophiothrix fragilis</i> and/or <i>Ophiocomina nigra</i> brittlestar beds on sublittoral mixed sediment
SS.SMx.IMx	Infralittoral mixed sediment
SS.SMx.IMx.Lim	<i>Limaria hians</i> beds in tide-swept sublittoral muddy mixed sediment
SS.SSa.IMuSa	Infralittoral muddy sand
SS.SSa.IMuSa.AreISa	<i>Arenicola marina</i> in infralittoral fine sand or muddy sand



Appendix 2. PMF Biotope records 2017

Survey Name	Event Name	Event Reference/Form Number	Biotope Code	Qualifier
2017 Seasearch Scotland Small Isles survey	Rubha Na Crannaig, Isle of Eigg	SC17/143	CR.HCR.XFa.SwiLgAs	Certain match; part record
2017 Seasearch Scotland 'Hebs' survey - Kerrera sound area	Auliston Point, Loch Sunart	SC17/058	CR.MCR.EcCr.CarSwi	Certain match; part record
2017 Seasearch Scotland Outer Hebrides survey	Gob Na H-airde Moire, W Lewis	SC17/075	CR.MCR.EcCr.CarSwi	Certain match; part record
2017 Seasearch Scotland Outer Hebrides survey	Gob Na H-airde Moire (S headland) W lewis	SC17/076	CR.MCR.EcCr.CarSwi	Certain match; part record
2017 Seasearch Scotland Outer Hebrides survey	Ostern, Sound of Kearstag, Scarp, W Lewis	SC17/077	CR.MCR.EcCr.CarSwi	Certain match; part record
2017 Seasearch Scotland Small Isles survey	Canna Wall, SE Sanday	SC17/210	CR.MCR.EcCr.CarSwi	Certain match; whole record
2017 Seasearch Scotland Loch Creran survey	E of Sealife centre (17)	SC17/065	IR.LIR.IFaVS	Certain match; whole record



Survey Name	Event Name	Event Reference/Form Number	Biotope Code	Qualifier
2017 Seasearch Scotland Loch Creran survey	E of Rhuba Rhiabhach (66)	SC17/080	IR.LIR.IFaVS	Certain match; whole record
2017 Seasearch Scotland West Loch Tarbert survey	Sgeir a Choire, opposite Kennacraig ferry terminal	SW17/001	IR.LIR.IFaVS.MytRS	Certain match; whole record
2017 Seasearch Scotland Loch Duich survey	The boat shed, Letterfearn	SC17/172	IR.LIR.Lag	Certain match; part record
2017 Seasearch Scotland Loch Duich survey	Old boat shed, Letterfearn	SC17/173	IR.LIR.Lag	Certain match; part record
2017 Seasearch Scotland Loch Duich survey	Hopscotch, Rattagan	SC17/175	IR.LIR.Lag	Certain match; part record
2017 Seasearch Scotland Loch Creran survey	Creagan Inn	SC17/177	IR.LIR.Lag	Certain match; part record
2017 Seasearch Scotland Loch Creran survey	Creagan Inn	SC17/178	IR.LIR.Lag	Certain match; part record
2017 Seasearch Scotland Arran survey	Newton Road, Lochranza	SC17/179	IR.LIR.Lag	Certain match; part record
2017 Seasearch Scotland Loch Duich survey	Hopscotch, Ratagan YHA	SC17/180	IR.LIR.Lag	Certain match; part record
2017 Seasearch Scotland Loch Creran survey	Creagan Inn	SC17/218	IR.LIR.Lag	Certain match; part record



Survey Name	Event Name	Event Reference/Form Number	Biotope Code	Qualifier
2017 Seasearch Scotland Loch Carron Survey	Conservation Bay	SC17/222	IR.LIR.Lag	Certain match; part record
2017 Seasearch Scotland Loch Carron Survey	Conservation Bay	SC17/223	IR.LIR.Lag	Certain match; part record
2017 Seasearch Scotland Firth of Lorn, Loch Linnhe and Loch Leven survey	Puffin Bay, 2 miles from Oban	SC17/224	IR.LIR.Lag	Certain match; part record
2017 Seasearch Scotland Summer Isles and Loch Broom survey	Port Beag Chalets, Achiltibuie	SW17/036	IR.LIR.Lag	Certain match; whole record
2017 Seasearch Scotland Summer Isles and Loch Broom survey	Leckelm Farm Jetty	SW17/039	IR.LIR.Lag	Certain match; whole record
2017 Seasearch Scotland 'Hebs' survey - Kerrera sound area	Liath Sgeir, Loch linnhe	SC17/085	IR.MIR.KR.Lhyp	Certain match; whole record
2017 Seasearch Scotland Summer Isles and Loch Broom survey	N side Sgeir Nam Mult	SW17/032	IR.MIR.KR.Lhyp	Certain match; part record



Survey Name	Event Name	Event Reference/Form Number	Biotope Code	Qualifier
2017 Seasearch Scotland Summer Isles and Loch Broom survey	Latto's Rock, skerry between Tanera Mor and Sgeir Nam Feusgan	SW17/040	IR.MIR.KR.LhypT	Uncertain match; whole record
2017 Seasearch Scotland Skye survey	Irishman's Point, Broadford Bay	SC17/149	IR.MIR.KT	Certain match; whole record
2017 Seasearch Scotland Loch Creran survey	E of Sealife centre (17)	SC17/065	SS.SBR.PoR.Ser	Certain match; part record
2017 Seasearch Scotland Loch Creran survey	W of Rubha Garbh (67)	SC17/067	SS.SBR.PoR.Ser	Certain match; whole record
2017 Seasearch Scotland Loch Creran survey	E of Sealife center (16)	SC17/079	SS.SBR.PoR.Ser	Certain match; whole record
2017 Seasearch Scotland Loch Creran survey	E of Rhuba Rhiabhach (66)	SC17/080	SS.SBR.PoR.Ser	Certain match; whole record
2017 Seasearch Scotland Loch Creran survey	Quarry worms	SC17/111	SS.SBR.PoR.Ser	Certain match; whole record
2017 Seasearch Scotland Loch Creran survey	Quarry worms	SC17/112	SS.SBR.PoR.Ser	Certain match; whole record
2017 Seasearch Scotland Loch Creran survey	Site 16 between Sea Life and Creran Marine	SC17/114	SS.SBR.PoR.Ser	Certain match; part record
2017 Seasearch Scotland Loch Creran survey	Quarry road worm reef	SC17/225	SS.SBR.PoR.Ser	Certain match; whole record



Survey Name	Event Name	Event Reference/Form Number	Biotope Code	Qualifier
2017 Seasearch Scotland Loch Creran survey	Rubh'an Tigh- Shalainn, N of Barcaldine pier	SW17/021	SS.SBR.PoR.Ser	Certain match; part record
2017 Seasearch Scotland Loch Creran survey	Worm reef E of Sea Life centre (17)	SW17/025	SS.SBR.PoR.Ser	Certain match; whole record
2017 Seasearch Scotland Loch Creran survey	W of Rulla Gargh (67)	SW17/026	SS.SBR.PoR.Ser	Certain match; part record
2017 Seasearch Scotland Loch Creran survey	Rubha Teithil, NE Barcaldine pier (9)	SW17/028	SS.SBR.PoR.Ser	Certain match; whole record
2017 Seasearch Scotland Gourock Modiolus survey	Gourock dive club slip	SC17/023	SS.SBR.SMus.ModCvar	Certain match; whole record
2017 Seasearch Scotland Gourock Modiolus survey	Gourock dive club slip	SC17/104	SS.SBR.SMus.ModHAs	Certain match; part record
2017 Seasearch Scotland Gourock Modiolus survey	Gourock dive club slip	SC17/104	SS.SBR.SMus.ModHAs	Certain match; part record
2017 Seasearch Scotland Loch Creran survey	Queenie reef	SC17/107	SS.SBR.SMus.ModHAs	Certain match; whole record
2017 Seasearch Scotland Loch Creran survey	Queenie reef	SC17/109	SS.SBR.SMus.ModHAs	Certain match; whole record



Survey Name	Event Name	Event Reference/Form Number	Biotope Code	Qualifier
2017 Seasearch Scotland Loch Creran survey	13 steps/Queenie reef	SC17/110	SS.SBR.SMus.ModHAs	Certain match; whole record
2017 Seasearch Scotland Scapa Flow survey	Markgraf wreck, Scapa Flow	SC17/135	SS.SBR.SMus.ModHAs	Certain match; whole record
2017 Seasearch Scotland Scapa Flow survey	Konig wreck, Scapa Flow	SC17/140	SS.SBR.SMus.ModHAs	Certain match; part record
2017 Seasearch Scotland Loch Creran survey	Creagan Inn	SC17/178	SS.SBR.SMus.ModHAs	Certain match; whole record
2017 Seasearch Scotland Loch Duich survey	Hopscotch, Ratagan YHA	SC17/180	SS.SBR.SMus.ModHAs	Certain match; part record
2017 Seasearch Scotland Loch Long survey	Conger Alley, Arrochar	SC17/216	SS.SBR.SMus.ModHAs	Certain match; whole record
2017 Seasearch Scotland Loch Creran survey	Creagan Inn	SC17/218	SS.SBR.SMus.ModHAs	Certain match; whole record
2017 Seasearch Scotland Loch Creran survey	Quarry road worm reef	SC17/225	SS.SBR.SMus.ModHAs	Certain match; whole record
2017 Seasearch Scotland Loch Long survey	Twin Piers, Arrochar	SC17/226	SS.SBR.SMus.ModHAs	Certain match; whole record
2017 Seasearch Scotland Gourock Modiolus survey	Gourock dive club slip, 500m SW of Kempock Point	SW17/004	SS.SBR.SMus.ModHAs	Certain match; whole record



Survey Name	Event Name	Event Reference/Form Number	Biotope Code	Qualifier
2017 Seasearch Scotland Loch Creran survey	Upper basin, 800m E of Creagan bridge	SW17/006	SS.SBR.SMus.ModHAs	Certain match; whole record
2017 Seasearch Scotland 'Hebs' survey - Kerrera sound area	Grey Rocks, Sound of Mull	SC17/054	SS.SCS.CCS.Nmix	Certain match; whole record
2017 Seasearch Scotland Skye survey	Eilean Sgorach Maol, S of Armadale Bay	SC17/142	SS.SMp.KSwSS	Certain match; part record
2017 Seasearch Scotland Loch Fyne survey	Horses Bite, N of Tarbert	SC17/144	SS.SMp.KSwSS	Certain match; whole record
2017 Seasearch Scotland Carna (Loch Sunart) survey	Carna jetty	SC17/200	SS.SMp.KSwSS	Certain match; part record
2017 Seasearch Scotland Loch Long survey	Conger Alley, Arrochar	SC17/216	SS.SMp.KSwSS	Certain match; whole record
2017 Seasearch Scotland Loch Carron Survey	Conservation Bay	SC17/222	SS.SMp.KSwSS	Certain match; whole record
2017 Seasearch Scotland Summer Isles and Loch Broom survey	Bardentarbet Bay pier, 1km from Achiltibuie	SW17/037	SS.SMp.KSwSS	Certain match; whole record
2017 Seasearch Scotland Small Isles survey	Gurdil Bay, NW Rhum	SC17/097	SS.SMp.Mrl	Certain match; part record



Survey Name	Event Name	Event Reference/Form Number	Biotope Code	Qualifier
2017 Seasearch Scotland Small Isles survey	Eilean Chathastal, outside Eigg harbour	SC17/131	SS.SMp.Mrl	Certain match; part record
2017 Seasearch Scotland Arran survey	Clauchlands farm car park, Lamlash Bay	SC17/164	SS.SMp.SSgr.Zmar	Certain match; whole record
2017 Seasearch Scotland Loch Sween survey	Linne Mhuirrich North HWU/SNH oyster project	SW17/022	SS.SMp.SSgr.Zmar	Certain match; whole record
2017 Seasearch Scotland Loch Nevis survey	Bacgobhar, S side head of loch	SC17/101	SS.SMu.CFiMu.BlyrAchi	Certain match; whole record
2017 Seasearch Scotland 'Hebs' survey - Kerrera sound area	Eilean Mor (E side), Loch Sunart	SC17/027	SS.SMu.CFiMu.MegMax	Certain match; whole record
2017 Seasearch Scotland 'Hebs' survey - Kerrera sound area	Eilean Mor (E side) Loch Sunart	SC17/032	SS.SMu.CFiMu.MegMax	Certain match; whole record
2017 Seasearch Scotland Small Isles survey	Eilean Chathastal, outside Eigg harbour	SC17/131	SS.SMu.CFiMu.MegMax	Certain match; part record
2017 Seasearch Scotland Loch Duich survey	E of Tigh A Mholain, Loch Beg	SC17/018	SS.SMu.CFiMu.SpnMeg	Certain match; part record
2017 Seasearch Scotland Loch Duich survey	S Ratagan	SC17/021	SS.SMu.CFiMu.SpnMeg	Certain match; part record



Survey Name	Event Name	Event Reference/Form Number	Biotope Code	Qualifier
2017 Seasearch Scotland 'Hebs' survey - Kerrera sound area	Sgeirean Dubha, Kerrera Sound	SC17/046	SS.SMu.CFiMu.SpMmeg	Certain match; part record
2017 Seasearch Scotland Loch Fyne survey	Quarry view tearooms, Furnace	SC17/051	SS.SMu.CFiMu.SpMmeg	Certain match; part record
2017 Seasearch Scotland 'Hebs' survey - Kerrera sound area	Rubha An T-Sassunaich, Sound of Mull	SC17/105	SS.SMu.CFiMu.SpMmeg	Certain match; whole record
2017 Seasearch Scotland Loch Creran survey	Site 16 between Sea Life and Creran Marine	SC17/114	SS.SMu.CFiMu.SpMmeg	Certain match; whole record
2017 Seasearch Scotland Loch Etive survey	Rubh Aird An Droighinn wreck, near Bonawe quarry	SC17/119	SS.SMu.CFiMu.SpMmeg	Certain match; whole record
2017 Seasearch Scotland Skye survey	E Luib layby, Loch Ainort	SC17/132	SS.SMu.CFiMu.SpMmeg	Certain match; whole record
2017 Seasearch Scotland Lochalsh survey	Bakery Bay, Lower Ardelve	SC17/150	SS.SMu.CFiMu.SpMmeg	Certain match; whole record
2017 Seasearch Scotland Loch Duich survey	Collie Point, Loch Beg	SC17/167	SS.SMu.CFiMu.SpMmeg	Certain match; part record
2017 Seasearch Scotland Carna (Loch Sunart) survey	N of Bo Crithean, West side	SC17/199	SS.SMu.CFiMu.SpMmeg	Certain match; whole record



Survey Name	Event Name	Event Reference/Form Number	Biotope Code	Qualifier
2017 Seasearch Scotland Firth of Lorn, Loch Linnhe and Loch Leven survey	Manse Point, Loch Leven	SC17/212	SS.SMu.CFiMu.SpnMeg	Certain match; part record
2017 Seasearch Scotland Loch Carron Survey	Halfway between Sgeir Bhuidhe and Sgeir Beag	NT17/016	SS.SMx.IMx.Lim	Certain match; part record
2017 Seasearch Scotland Loch Carron Survey	Portchullin, near Achmore	SC17/013	SS.SMx.IMx.Lim	Certain match; part record
2017 Seasearch Scotland Loch Carron Survey	Portchullin (N), near Archmore	SC17/014	SS.SMx.IMx.Lim	Certain match; part record
2017 Seasearch Scotland 'Hebs' survey - Kerrera sound area	Eilean Mor (E side), Loch Sunart	SC17/027	SS.SMx.IMx.Lim	Certain match; whole record
2017 Seasearch Scotland 'Hebs' survey - Kerrera sound area	Eilean Mor (E side), Loch Sunart	SC17/029	SS.SMx.IMx.Lim	Certain match; part record
2017 Seasearch Scotland 'Hebs' survey - Kerrera sound area	Eilean Mor (E side) Loch Sunart	SC17/032	SS.SMx.IMx.Lim	Certain match; whole record
2017 Seasearch Scotland 'Hebs' survey - Kerrera sound area	Eilean Mor (E side) Loch Sunart	SC17/057	SS.SMx.IMx.Lim	Certain match; whole record



Survey Name	Event Name	Event Reference/Form Number	Biotope Code	Qualifier
2017 Seasearch Scotland Scapa Flow survey	Seydlitz wreck, Scapa Flow	SC17/136	SS.SMx.IMx.Lim	Certain match; part record
2017 Seasearch Scotland 'Hebs' survey - Kerrera sound area	Eileam Mor, E side, Loch Sunart	SC17/214	SS.SMx.IMx.Lim	Certain match; part record

Appendix 3. PMF Species recorded

Survey	Location	Reference	Date	Species Name	SACFORN
2017 Seasearch Scotland Summer Isles and Loch Broom survey	Tanera Mor SE coast	SW17/005	22-Apr-17	Lophius piscatorius	R
2017 Seasearch Scotland Summer Isles and Loch Broom survey	Eilean Mor, Tanera Mor	SW17/008	22-Apr-17	Leptometra celtica	R
2017 Seasearch Scotland Loch Etive survey	Rubh Aird An Droighinn wreck, near Bonawe quarry	SC17/123	26-Feb-17	Arctica islandica	R
2017 Seasearch Scotland Lochalsh survey	East Lodge, Balmacara Bay	SC17/017	10-Feb-17	Leptometra celtica	O
2017 Seasearch Scotland Small Isles survey	Rubha Na Crannaig, Isle of Eigg	SC17/143	20-Aug-17	Parazoanthus anguicomus	R
2017 Seasearch Scotland Small Isles survey	Sgeir A'Phuirt, Canna harbour	SC17/130	21-Aug-17	Alcyonium hibernicum	O
2017 Seasearch Scotland Small Isles survey	Sgeir A'Phuirt, Canna harbour	SC17/130	21-Aug-17	Molva molva	R
2017 Seasearch Scotland Small Isles survey	NE Compass Hill, Canna	SC17/096	31-Aug-17	Parazoanthus anguicomus	F



Survey	Location	Reference	Date	Species Name	SACFORN
2017 Seasearch Scotland Loch Nevis survey	Smyth Rock	SC17/128	24-Aug-17	Leptometra celtica	R
2017 Seasearch Scotland Outer Hebrides survey	Rubha Vallarip (Little Minch), SE Harris	SC17/078	25-Jun-17	Molva molva	R
2017 Seasearch Scotland Outer Hebrides survey	Rubha Vallarip (Little Minch), SE Harris	SC17/078	25-Jun-17	Alcyonium hibernicum	O
2017 Seasearch Scotland Outer Hebrides survey	Rubha Vallarip (Little Minch), SE Harris	SC17/078	25-Jun-17	Parazoanthus anguicomus	R
2017 Seasearch Scotland Outer Hebrides survey	Gob Na H-airde Moire, W Lewis	SC17/075	27-Jun-17	Dipturus batis	R
2017 Seasearch Scotland Outer Hebrides survey	Gob Na H-airde Moire (S headland) W Lewis	SC17/076	27-Jun-17	Dipturus batis	R
2017 Seasearch Scotland Outer Hebrides survey	Ostern, Sound of Kearstag, Scarp, W Lewis	SC17/077	28-Jun-17	Molva molva	R
2017 Seasearch Scotland Outer Hebrides survey	Ostern, Sound of Kearstag, Scarp, W Lewis	SC17/077	28-Jun-17	Palinurus elephas	R
2017 Seasearch Scotland 'Hebs' survey - Kerrera sound area	Carnas Eigneig, Loch Linnhe	SC17/045	15-Apr-17	Leptometra celtica	C
2017 Seasearch Scotland 'Hebs' survey - Kerrera sound area	Camas Eigneig, Loch Linnhe	SC17/061	15-Apr-17	Arctica islandica	O
2017 Seasearch Scotland 'Hebs' survey - Kerrera sound area	Camas Eigneig, Loch Linnhe	SC17/061	15-Apr-17	Leptometra celtica	O
2017 Seasearch Scotland 'Hebs' survey - Kerrera sound area	Camas Eigneig, Loch Linnhe	SC17/087	15-Apr-17	Leptometra celtica	F
2017 Seasearch Scotland 'Hebs' survey - Kerrera sound area	Camas Eigneig, Loch Linnhe	SC17/048	15-Apr-17	Arctica islandica	O
2017 Seasearch Scotland 'Hebs' survey - Kerrera sound area	Camas Eigneig, Loch Linnhe	SC17/049	15-Apr-17	Leptometra celtica	F



Survey	Location	Reference	Date	Species Name	SACFORN
2017 Seasearch Scotland 'Hebs' survey - Kerrera sound area	Liarth Sgeir, Loch Linnhe	SC17/044	16-Apr-17	Leptometra celtica	O
2017 Seasearch Scotland 'Hebs' survey - Kerrera sound area	Auliston Point, Loch Sunart	SC17/033	17-Apr-17	Parazoanthus anguicomus	C
2017 Seasearch Scotland 'Hebs' survey - Kerrera sound area	Auliston Point, Loch Sunart	SC17/058	17-Apr-17	Alcyonium hibernicum	R
2017 Seasearch Scotland 'Hebs' survey - Kerrera sound area	Auliston Point, Loch Sunart	SC17/058	17-Apr-17	Parazoanthus anguicomus	C
2017 Seasearch Scotland 'Hebs' survey - Kerrera sound area	Auliston point, Loch Sunart	SC17/038	17-Apr-17	Leptometra celtica	R
2017 Seasearch Scotland 'Hebs' survey - Kerrera sound area	Auliston point, Loch Sunart	SC17/038	17-Apr-17	Parazoanthus anguicomus	C
2017 Seasearch Scotland 'Hebs' survey - Kerrera sound area	Auliston point, Loch Sunart	SC17/038	17-Apr-17	Leptometra celtica	R
2017 Seasearch Scotland 'Hebs' survey - Kerrera sound area	Auliston point, loch Sunart	SC17/037	17-Apr-17	Parazoanthus anguicomus	R
2017 Seasearch Scotland 'Hebs' survey - Kerrera sound area	Eilean Mor, E side, Loch Sunart	SC17/214	18-Apr-17	Arctica islandica	R
2017 Seasearch Scotland 'Hebs' survey - Kerrera sound area	Eilean Mor (E side) Loch Sunart	SC17/057	18-Apr-17	Arctica islandica	O
2017 Seasearch Scotland 'Hebs' survey - Kerrera sound area	Eilean Mor (E side), Loch Sunart	SC17/029	18-Apr-17	Arctica islandica	F
2017 Seasearch Scotland 'Hebs' survey - Kerrera sound area	Eilean Mor (E side), Loch Sunart	SC17/029	18-Apr-17	Molva molva	R
2017 Seasearch Scotland 'Hebs' survey - Kerrera sound area	Eilean Mor (E side), Loch Sunart	SC17/027	18-Apr-17	Arctica islandica	R
2017 Seasearch Scotland 'Hebs' survey - Kerrera sound area	'Some underwater rock', Glenmore Bay, Loch Sunart	SC17/028	18-Apr-17	Leptometra celtica	O



Survey	Location	Reference	Date	Species Name	SACFORN
2017 Seasearch Scotland 'Hebs' survey - Kerrera sound area	'Some underwater rock', Glenmore Bay, Loch Sunart	SC17/028	18-Apr-17	Parazoanthus anguicomus	F
2017 Seasearch Scotland 'Hebs' survey - Kerrera sound area	'Some Underwater Rock, Glenmore Bay, Loch Sunart	SC17/030	18-Apr-17	Leptometra celtica	F
2017 Seasearch Scotland 'Hebs' survey - Kerrera sound area	'Some underwater rock',, Glenmore Bay, Loch Sunart	SC17/056	18-Apr-17	Leptometra celtica	C
2017 Seasearch Scotland 'Hebs' survey - Kerrera sound area	'Some underwater rock', Glenmore Bay, Loch Sunart	SC17/026	18-Apr-17	Leptometra celtica	F
2017 Seasearch Scotland 'Hebs' survey - Kerrera sound area	'Some underwater rock', Glenmore Bay, Loch Sunart	SC17/026	18-Apr-17	Leptometra celtica	O
2017 Seasearch Scotland 'Hebs' survey - Kerrera sound area	'Some underwater rock', Glenmore Bay, Loch Sunart	SC17/031	18-Apr-17	Leptometra celtica	C
2017 Seasearch Scotland 'Hebs' survey - Kerrera sound area	Rubha An T-Sassunaich, Sound of Mull	SC17/105	19-Apr-17	Leptometra celtica	O
2017 Seasearch Scotland 'Hebs' survey - Kerrera sound area	Rubha An T-Sassunaich, Sound of Mull	SC17/055	19-Apr-17	Leptometra celtica	R
2017 Seasearch Scotland 'Hebs' survey - Kerrera sound area	Rubha An T-Sassunaich, Sound of Mull	SC17/055	19-Apr-17	Leptometra celtica	R
2017 Seasearch Scotland Firth of Lorn, Loch Linnhe and Loch Leven survey	SE Bach Island, SW Kerrera, Firth of Lorn	SC17/124	22-Jan-17	Parazoanthus anguicomus	O
2017 Seasearch Scotland Firth of Lorn, Loch Linnhe and Loch Leven survey	Conger Reef, E of Garvellachs, Firth of Lorn	SC17/116	06-May-17	Parazoanthus anguicomus	C



Survey	Location	Reference	Date	Species Name	SACFORN
2017 Seasearch Scotland Firth of Lorn, Loch Linnhe and Loch Leven survey	Conger Reef, E of Garvellachs, Firth of Lorn	SC17/116	06-May-17	Parazoanthus anguicomus	R
2017 Seasearch Scotland Firth of Lorn, Loch Linnhe and Loch Leven survey	Heather Island, Kerrera Sound	SC17/092	04-Sep-17	Leptometra celtica	O
2017 Seasearch Scotland Firth of Lorn, Loch Linnhe and Loch Leven survey	Rudha Mhk Mharcuis, Easdale	SC17/126	07-Oct-17	Alcyonium hibernicum	O
2017 Seasearch Scotland Sound of Mull Survey	Thesis wreck	SC17/089	05-Sep-17	Pollachius virens	F
2017 Seasearch Scotland Loch Carron Survey	Halfway between Sgeir Bhuidhe and Sgeir Beag	NT17/016	21-Apr-17	Arctica islandica	O
2017 Seasearch Scotland Scapa Flow survey	Markgraf wreck, Scapa Flow	SC17/135	18-Oct-17	Arctica islandica	O
2017 Seasearch Scotland Scapa Flow survey	Brummer wreck, Scapa Flow	SC17/138	18-Oct-17	Molva molva	R
2017 Seasearch Scotland Kylesku survey	Kylesku ferry slip, E of A894 bridge	SW17/034	05-Sep-17	Leptometra celtica	C
2017 Seasearch Scotland Kylesku survey	Kylesku ferry slip, E of A894 bridge	SW17/034	05-Sep-17	Leptometra celtica	F
2017 Seasearch Scotland North East survey	Collie Rocks, Macduff	SC17/103	21-May-17	Leptometra celtica	F
2017 Seasearch Scotland Loch Creran survey	Rubh'an Tigh-Shalainn	SC17/230	11-Jun-17	Pomatoschistus minutus	R
2017 Seasearch Scotland Loch Creran survey	Quarry road worm reef	SC17/225	30-Nov-17	Pomatoschistus minutus	O
2017 Seasearch Scotland Loch Duich survey	Collie Point, Loch Beg	SC17/167	17-Sep-17	Arctica islandica	R



Survey	Location	Reference	Date	Species Name	SACFORN
2017 Seasearch Scotland Small Isles survey	Canna Wall, SE Sanday	SC17/210	22-Aug-17	Pollachius virens	
2017 Seasearch Scotland Loch Nevis survey	East of Stoul, SW shore	SC17/207	27-Aug-17	Scomber scombrus	R
2017 Seasearch Scotland Scapa Flow survey	Seydlitz wreck, Cava Island	SC17/209	27-Sep-17	Molva molva	O
2017 Seasearch Scotland Loch Long survey	Conger Alley, Arrochar	SC17/216	26-Nov-17	Pomatoschistus minutus	F
2017 Seasearch Scotland Loch Fyne survey	Horses Bite, N of Tarbert	SC17/144	09-Dec-17	Leptometra celtica	R
2017 Seasearch Scotland Loch Fyne survey	Horses Bite, N of Tarbert	SC17/144	09-Dec-17	Leptometra celtica	F
2017 Seasearch Scotland Carna (Loch Sunart) survey	Rubha An Ailsig Mhoir, NW	SC17/197	01-Sep-17	Leptometra celtica	O
2017 Seasearch Scotland Arran survey	Clauchlands farm car park, Lamlash Bay	SC17/164	18-Sep-17	Arctica islandica	F
2017 Seasearch Scotland Arran survey	South Bank, S of Holy Isle	SC17/181	21-Sep-17	Molva molva	R
2017 Seasearch Scotland St Abbs and Eyemouth survey	Black Carrs	NT17/256	18-Aug-17	Lophius piscatorius	R